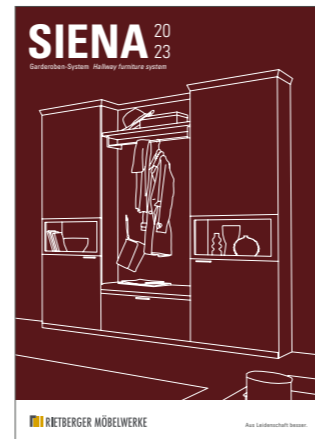
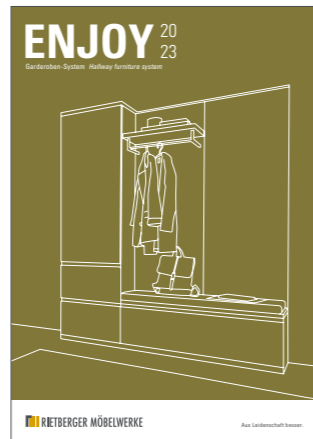
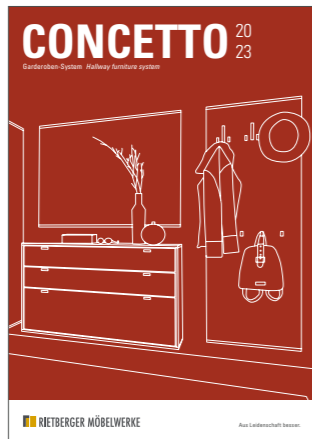
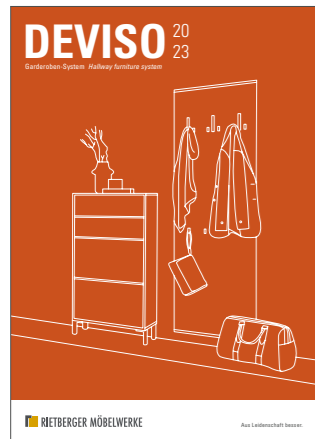


# SIENA 20 23

Garderoben-System *Hallway furniture system*





**Legende Legend**

Breite <i>Width</i>	
Höhe <i>Height</i>	
Tiefe <i>Depth</i>	
Lack matt <i>Lacquer matt</i>	
Lack hochglänzend <i>High-gloss lacquer</i>	
Holz <i>Wood</i>	

Stoff <i>Fabric</i>	
Leder <i>Leather</i>	
Griff <i>Handle</i>	
Klarglas <i>Clear glass</i>	
Satiniertes Glas <i>Frosted glass</i>	

Planungsbeispiele *Planning examples*



4–29

4–5



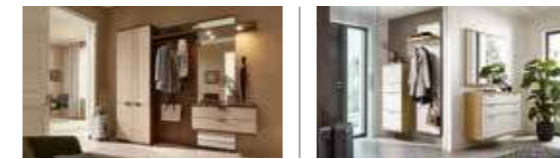
6–7



8–9 | 10–11



12–15



16–17 | 18–19



20–21



22–25



28–29

**Exterior – stilgebende Elemente *Exterior – style elements***

Material, Oberfläche & Farbe *Materials, finish & colour*

26–32

Griffe *Handles*

27

Stoff- und Lederkollektionen *Upholstery collections*

32

Beispielartikel *Sample articles*

33

**Interior – Komfort und Ausstattung *Interior – Comfort and features***

34–35



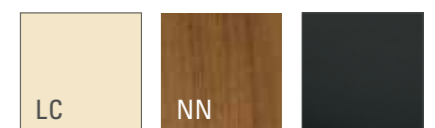
#### 4-5

31298 Hängeschuhschrank *Hanging shoe cabinet*  
 ↳ 228,2 cm ↳ 61,2 cm ↳ 41,0 cm  
 LC – Lack Crema *Crema lacquer* ◇

32517 Wandspiegel *Wall mirror*  
 ↳ 225,0 cm ↳ 98,2 cm ↳ 4,4 cm  
 LC – Lack Crema *Crema lacquer* ◇

84430 Korpuselement mit Kufen *Carcass element with runners*  
 ↳ 63,2 cm ↳ 125,0 cm ↳ 41,0 cm  
 NN – Nussbaum Nova *Walnut nova* ◇  
 Kufen Anthrazit *Runners anthrazite* ◇

87853 Garderobenkombination *Hallway combination*  
 ↳ 138,2 cm ↳ 220,8 cm ↳ 41,0 cm  
 LC – Lack Crema *Crema lacquer* ◇





## 6-7

87854 Garderobenkombination *Hallway combination*  
 ↳ 225,0 cm ↳ 220,3 cm ↳ 39,6 cm  
 S3 – Lack Schiefergrau *Slate grey lacquer*  
 ES – Eiche Sand *Sand oak*  
 5H – Stoff *Fabric Ocean Night*  
 ↳ J9 – Schwarz matt *Black matt*



87855 Schuhschrank mit Kufen *Shoe cabinet with runners*  
 ↳ 225,0 cm ↳ 105,6 cm ↳ 39,6 cm  
 S3 – Lack Piniengrün *Pine green lacquer*  
 Kufen Schwarz matt *Runners lack matt*



83280 Wandspiegel rund *Wall mirror round*  
 Ø 90 cm





## 8-9

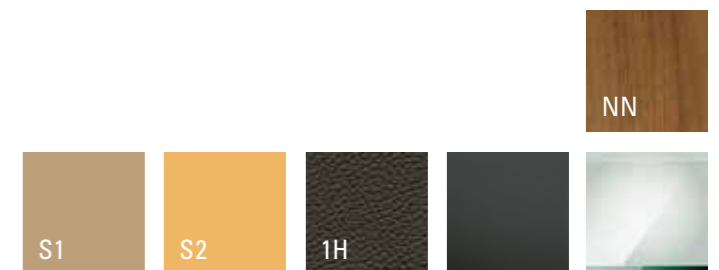
68352 Garderobenkombination *Hallway combination*  
 ↳ 198,2 cm ↳ 220,8 cm ↳ 41,0 cm  
 S1 – Lack Macchiata HG *Macchiata lacquer HG*  
 NN – Nussbaum Nova *Walnut nova*  
 1H – Leder *Leather Hermes Bruin*  
 J9 – Schwarz matt *Black matt*

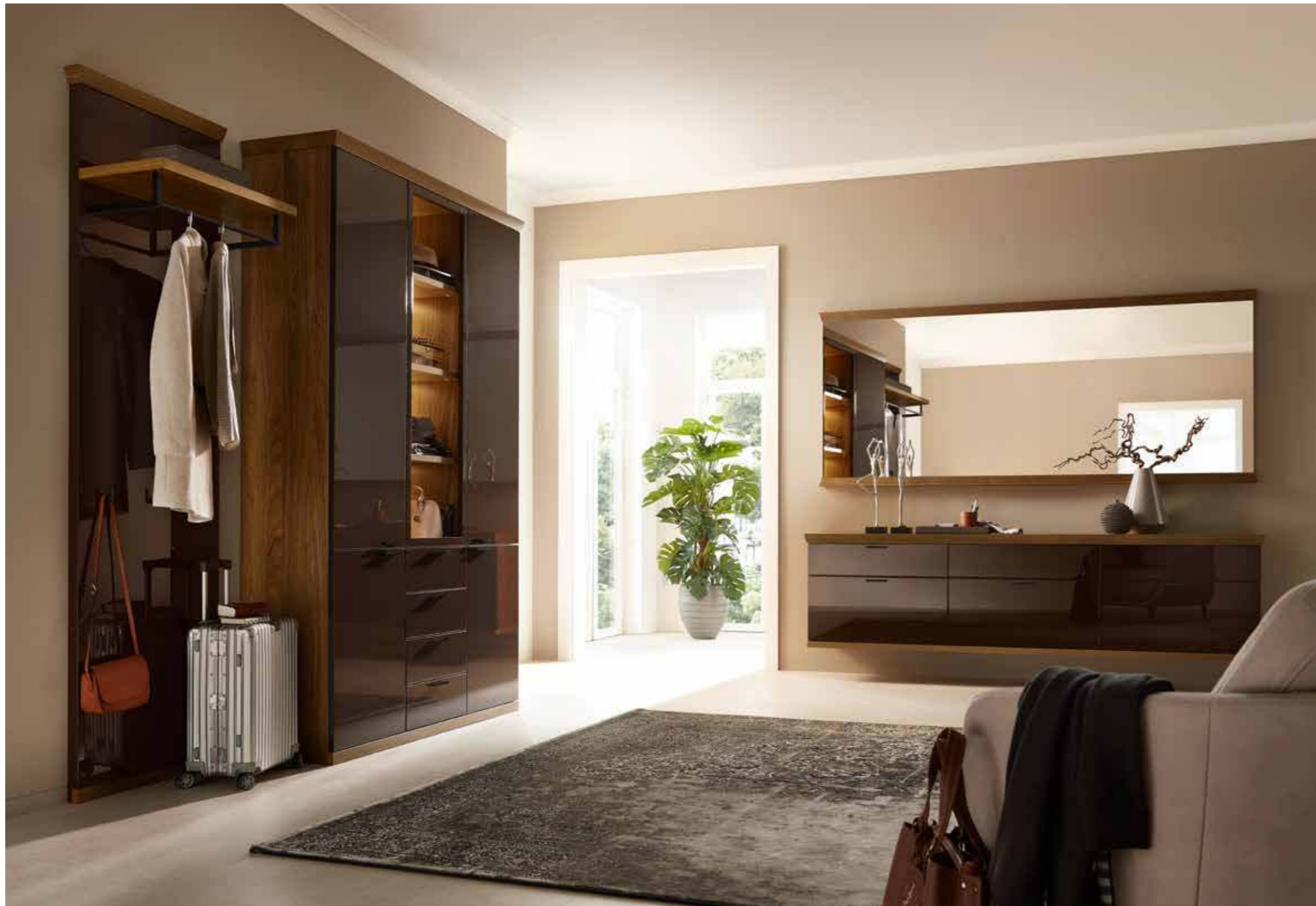


85349 Hängesideboard *Hanging sideboard*  
 ↳ 228,2 cm ↳ 61,2 cm ↳ 41,0 cm  
 S2 – Lack Marill *Marill lacquer*  
 J9 – Schwarz matt *Black matt*



32517 Wandspiegel *Wall mirror*  
 ↳ 225,0 cm ↳ 98,2 cm ↳ 4,4 cm  
 S2 – Lack Marill *Marill lacquer*





## 10-11

32558 Garderobenpaneel *Hallway panel*  
 ↳ 63,2 cm ↳ 220,8 cm ↳ 41,0 cm  
 R2 – Lack Espresso HG *Espresso lacquer HG*



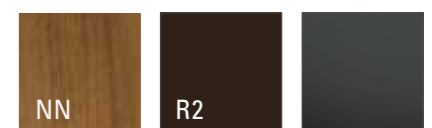
81115 Garderobenkombination *Hallway combination*  
 ↳ 138,2 cm ↳ 220,8 cm ↳ 41,0 cm  
 R2 – Lack Espresso HG *Espresso lacquer HG*  
 NN – Nussbaum Nova *Walnut nova*  
 J9 – Schwarz matt *Black matt*



31298 Hängeschuhschrank *Hanging shoe cabinet*  
 ↳ 228,2 cm ↳ 61,2 cm ↳ 41,0 cm  
 R2 – Lack Espresso HG *Espresso lacquer HG*  
 NN – Nussbaum Nova *Walnut nova*  
 J9 – Schwarz matt *Black matt*



32517 Wandspiegel *Wall mirror*  
 ↳ 225,0 cm ↳ 98,2 cm ↳ 4,4 cm  
 NN – Nussbaum Nova *Walnut nova*



NN

R2





## 12-13

32517 Wandspiegel *Wall mirror*  
 ↳ 225,0 cm ↳ 94,6 cm ↳ 4,4 cm  
 DR – Lack Dark Red *Dark red lacquer*



31298 Hängeschuhschrank *Hanging shoe cabinet*  
 ↳ 225,0 cm ↳ 59,4 cm ↳ 39,6 cm  
 DR – Lack Dark Red *Dark red lacquer*  
 ↳ T7 – Chrom glänzend *Shiny chrome*



## 14-15

76467 Garderobenkombination *Hallway combination*  
 ↳ 120,0 cm ↳ 219,0 cm ↳ 39,6 cm  
 DR – Lack Dark Red *Dark red lacquer*  
 NN – Nussbaum Nova *Walnut nova*  
 11 – Leder *Leather* *Hermes Nero*



76445 Offenes Garderobenelement *Open coat cupboard element*  
 ↳ 45,0 cm ↳ 219,0 cm ↳ 47,6 cm  
 DR – Lack Dark Red *Dark red lacquer*



NN

DR

11





## 16-17

81597 Garderobenkombination *Hallway combination*  
↔ 240,0 cm ↔ 219,0 cm ↔ 39,6 cm  
R4 – Lack Cashmere HG *Cashmere lacquer HG*  
OB – Asteiche Bourbon *Knotty oak bourbon*  
J9 – Schwarz matt *Black matt*



OB

R4



## 18-19

80482 Garderobenkombination *Hallway combination*  
 ↗ 135,0 cm ↘ 219,0 cm ↖ 30,0 cm  
 LW – Lack Weiß *White lacquer*  
 OA – Asteiche *Knotty oak*  
 ↘ T7 – Chrom glänzend *Shiny chrome*



32510 Wandspiegel *Wall mirror*  
 ↗ 120,0 cm ↘ 94,6 cm ↖ 4,4 cm  
 OA – Asteiche *Knotty oak*



75599 Hängeschuhschrank *Hanging shoe cabinet*  
 ↗ 120,0 cm ↘ 77,0 cm ↖ 39,6 cm  
 LW – Lack Weiß *White lacquer*  
 OA – Asteiche *Knotty oak*  
 ↘ T7 – Chrom glänzend *Shiny chrome*





## 20-21

81114 Garderobenkombination *Hallway combination*  
 ↗ 228,2 cm ↖ 184,4 cm ↗ 41,0 cm  
 KB – Kirschbaum *Cherry*  
 ↗ T7 – Chrom glänzend *Shiny chrome*



KB







## 22-23

- 31044 Hängeschuhschrank *Hanging shoe cabinet*  
 ↗ 60,0 cm ↘ 129,8 cm ↙ 30,0 cm  
 LW – Lack Weiß *White lacquer* ◇  
 ↘ T7 – Chrom glänzend *Shiny chrome*
- 76736 Paneel *Panel*  
 ↗ 60,0 cm ↘ 182,6 cm ↙ 30,0 cm  
 LW – Lack Weiß *White lacquer* ◇
- 77677 Hängeschuhschrank *Hanging shoe cabinet*  
 ↗ 60,0 cm ↘ 182,6 cm ↙ 39,6 cm  
 LW – Lack Weiß *White lacquer* ◇  
 ↘ T7 – Chrom glänzend *Shiny chrome*

## 24-25

- 31257 Garderobenkombination *Hallway combination*  
 ↗ 150,0 cm ↘ 219,0 cm ↙ 39,6 cm  
 LW – Lack Weiß *White lacquer* ◇  
 ↘ T7 – Chrom glänzend *Shiny chrome*
- freie Garderobeneckkombination *Hallway combination*  
 Planung ↗ 167,1 × 197,1 cm ↘ 219,0 cm ↙ 39,6 cm  
 LW – Lack Weiß *White lacquer* ◇  
 ↘ T7 – Chrom glänzend *Shiny chrome*



LW



## 28-29

- 80484 Schuhschrank *Shoe cabinet*  
 ↳ 225,0 cm ↳ 95,8 cm ↳ 39,6 cm  
 LH – Lack Platingrau HG *Platinum grey lacquer*  
 AN – Eiche Graphit *Graphite oak*  
 T7 – Chrom glänzend *Shiny chrome*
- 32517 Wandspiegel *Wall mirror*  
 ↳ 225,0 cm ↳ 94,6 cm ↳ 4,4 cm  
 AN – Eiche Graphit *Graphite oak*
- 80483 Garderobenkombination *Hallway combination*  
 ↳ 135,0 cm ↳ 219,0 cm ↳ 39,6 cm  
 LH – Lack Platingrau HG *Platinum grey lacquer*  
 AN – Eiche Graphit *Graphite oak*  
 T7 – Chrom glänzend *Shiny chrome*



AN

LH



Front + Korpus Front + Carcass

- |                                     |                                  |                                    |                                |
|-------------------------------------|----------------------------------|------------------------------------|--------------------------------|
| LW Lack Weiß white lacquer          | LC Lack Crema crema lacquer      | R6 Lack Seidengrau silk grey l.    | S1 Lack Macchiata macchiata l. |
| R4 Lack Cashmere cashmere l.        | R3 Lack Olivgrau olive grey l.   | R5 L. Brillantgrau diamond grey l. | LY Lack Grau grey lacquer      |
| LH Lack Platingrau platinum grey l. | P6 Lack Taupe taupe lacquer      | LT Lack Terra terra lacquer        | R2 Lack Espresso espresso l.   |
| LZ Lack Ziegelrot brick lacquer     | DR Lack Dark Red dark red l.     | R8 Lack Oxidrot oxide red l.       | R7 Lack Rosewood rosewood l.   |
| S2 Lack Marill marill lacquer       | S5 L. Piniengrün pine green l.   | P9 Lack Agave agave lacquer        | P8 Lack Ocean ocean lacquer    |
| S4 L. Atlantikblau atlantic blue l. | S3 L. Schiefergrau slate grey l. | LG Lack Graphit graphite lacquer   | LS Lack Schwarz black lacquer  |

Alle Lacke auch in Hochglanz erhältlich  
All finishes are also available in high-gloss type



Front + Korpus furniert Front + Carcass veneered

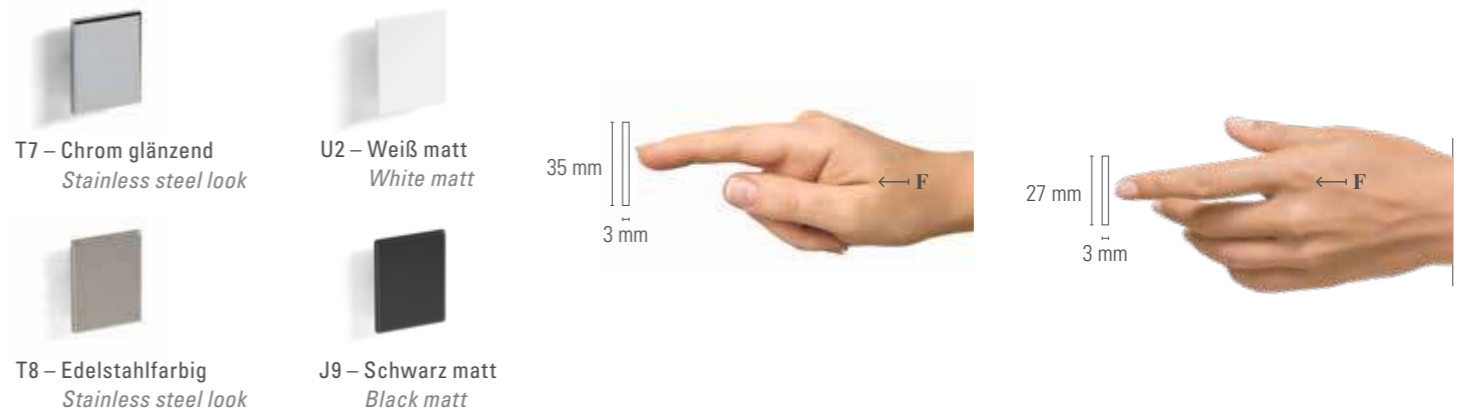
- |                                |                              |  |                               |
|--------------------------------|------------------------------|--|-------------------------------|
| BC Kristallbuche Beech crystal | ES Eiche Sand Sand oak       | OA Asteiche Knotty oak                 | BK Kernbuche Beech heartwood  |
| KB Kirschbaum Cherry           | NN Nussbaum Nova Walnut nova | OB Asteiche Bourbon Knotty oak bourbon | AN Eiche Graphit Graphite oak |

Innenausführung: Dekor Interior finish: Décor

Griffe Handles



Die Griffe sind außerdem in allen 24 Lackfarben erhältlich. The handles are also available in all 24 lacquer colours.









Alle Leuchten enthalten LED-Lampen, die innerhalb der Energieklasse E bis F liegen. Die LED-Lampen können nicht ausgetauscht werden. Each lamp is equipped with energy class E to F LEDs. The LEDs cannot be replaced.



Ihr Schuhportfolio findet in den verschiedenen Schränken ausreichend Stauraum. Im Kipper in Schuhkörben oder auf -rosten, oder wie in der Bank gezeigt auf einer Schutzmatte. Statten Sie Ihre Schränke ganz nach Ihren Wünschen aus.

The various cupboards offer plenty of storage space for your shoe collection: on the tilted shelf in shoe baskets, on shoe racks or without accessories as shown in the bench. Fill your cupboards in line with your precise wishes.



Auch als Designelement sind die Garderobenstangen und -haken schöne Details. The hanging rails and hooks are also beautiful details as design features.



Die Einteilung hilft, Ihren Alltag zu organisieren. The arrangement helps in organising your daily life.



rmw-wohnmobel.de

RMW Wohnmöbel GmbH & Co. KG  
Karl-Schiller-Straße 5 | 33397 Rietberg  
GERMANY

